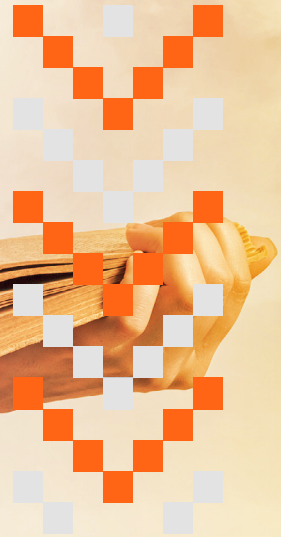




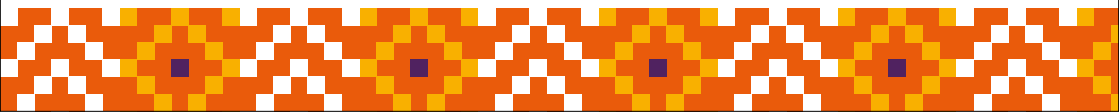
UNIVERSITY
OF
JOHANNESBURG

**Our Future
Reimagined**



Postgraduate Diploma in Higher Education

The Faculty of Education at UJ is committed to knowledge-making for 21st-century education. To this end, the faculty offers a **POSTGRADUATE DIPLOMA IN HIGHER EDUCATION (E5DHEQ)** programme with an NQF Level 8.



PURPOSE

The purpose of the programme is to develop academic staff as reflective practitioners by:

- a) Focusing on the relationship between theory and practice and the ways in which each informs and enriches the other.
- b) Expanding, strengthening and consolidating their knowledge of teaching, learning and assessment in higher education in the South African context.
- c) Facilitating their ability to develop, implement and assess informed and responsive curricula and related pedagogy, including learning with technology
- d) Developing their capacity as educational researchers.

The programme has been conceptualised and developed as a holistic and integrated programme, and therefore, outcomes a) to c) are all supported by the modules in “Teaching and Learning in Higher Education”, “Curriculum Development”, and “Assessment for Teaching and Learning”. Insights from these modules also inform the module in Research Methodology, which relates directly to the outcome.

ADMISSION REQUIREMENTS

To gain admission into the Postgraduate Diploma in Higher Education, a potential student should possess the following:

A bachelor’s degree or equivalent and currently engaged in teaching and learning in a higher education/FET institution or have had a minimum of one year’s experience in such an institution at the time of registration.

OR

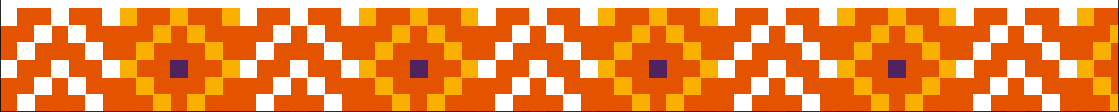
A general NQF level 6 first degree or diploma, plus a 120C NQF level 7 Advanced Diploma in Teaching/ Postgraduate Certificate in Education (PGCE) and currently be engaged in teaching and learning in a higher education/ FET institution or have had a minimum of one year’s experience in such an institution at the time of registration.

An average of 65% for the previous degree is required to be allowed into the program. In addition to the minimum admission requirements as outlined above, prospective students may undergo a selection process, including personal interviews and testing.

PROGRAMME STRUCTURE

- A. Minimum duration: Two years of formal instruction.
- B. The programme is only offered part-time.

All students are required to complete the six (6) compulsory core modules. The first three modules, which provide the framework for the rest of the course, “Teaching and Learning in Higher Education”, “Curriculum Development”, as well as “Assessment for Teaching and Learning”, must be completed first.



CURRICULUM

Curriculum summary – Post Graduate Diploma in Higher Education			
All modules are compulsory			
First-year – Compulsory modules (part-time)			
Module name	Module code	NQF level	Credits
Assessment for Learning in Higher Education	P8ALHEY	8	20
Curriculum Development in Higher Education	P8CDHEY	8	20
Teaching and Learning in Higher Education	P8TLHEY	8	20
Second year – Compulsory module (part-time)			
Learning with Technology in Higher Education	P8LTHEY	8	20
Research Methodology in Higher Education	P8RMHEY	8	20
Understanding Social Inclusion in Higher Education	P8USIHY	8	20

ADDITIONAL INFORMATION

Compulsory class attendance for **part-time** studies will be in the afternoons.

**Lectures and discussions may be conducted both physically (on campus) as well as virtually, as may be prescribed from time to time.*

DISCLAIMER

Fulfilling all the minimum entry requirements does not guarantee acceptance into a particular programme. The faculty reserves the right to limit numbers in line with its enrolment targets.

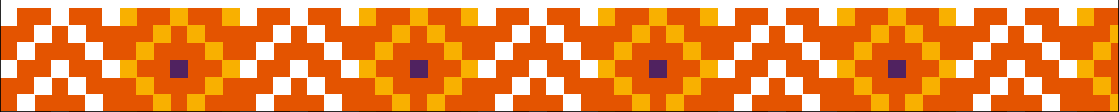
The Faculty of Education also reserves the right to cancel an application or registration in the event that there are insufficient student enrolments to ensure the viability of the programme.

APPLICATION AND REGISTRATION INFORMATION

To submit your **application**, apply online using the following link **Apply@UJ**. The closing dates can be seen on the UJ website.

The due dates for **registration** are available at **Registrations@UJ**.

**Only accepted applicants are permitted to register.*



CONTACT DETAILS

- **For academic-related matters** such as course content or class attendance, contact the programme coordinator, **Dr Kibbie Naidoo** (knaidoo@uj.ac.za).
- **For administrative-related matters** such as application statuses, registration, or fees contact **the Faculty's Academic Administration Office**: phone 011 559 3251 / 011 559 5562 or email eduqueries@uj.ac.za.
www.uj.ac.za/edu

