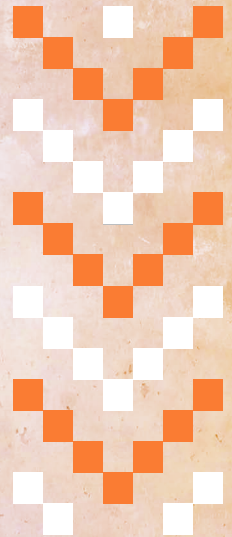




UNIVERSITY
OF
JOHANNESBURG

Our Future
Reimagined



Bachelor of Education Honours in Educational Psychology (H5EDPQ)

The Faculty of Education at UJ is committed to knowledge-making for 21st-century education. To this end, the faculty offers a **BACHELOR OF EDUCATION HONOURS IN EDUCATIONAL PSYCHOLOGY (H5EDPQ)** programme with an **NQF Level 8**.



PURPOSE

The purpose of this programme is to deliver qualified lay counsellors for the school community. This is done by providing students with comprehensive education and training that equips them to design and implement preventative and developmental programmes and monitor their effectiveness; refer learners, teachers, or parents appropriately to health practitioners; act as a resource in a school community and promote wellbeing in a social-cultural appropriate manner. The programme focuses on basic counselling skills; psycho-educational assessment, learning support, and career counselling and assessment. In addition, the programme focuses on the understanding of relevant research methodologies in the field of educational psychology.

ADMISSION REQUIREMENTS

To gain access into the BEd Honours in Educational Psychology programme, a potential student should possess the following:

A four-year Bachelor of Education degree with Education and Psychology as majors. The programme requires the applicant to have Psychology and Education 1, 2, and 3 in their BEd programme, with an average of 65% for both modules.

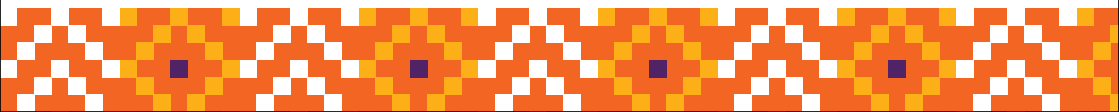
OR

A general NQF level 7 degree with Psychology as a major plus a Postgraduate Certificate in Education (PGCE). Psychology 1, 2, and 3 with an average of 65% in another degree and a PGCE with an average of 65%.

OUTCOMES OF THIS PROGRAMME

Students who complete this programme must demonstrate the following competencies:

- Consolidation and deepening of expertise in the field of counselling in schools.
- Integration of theoretical knowledge and practical competence of basic individual and group psycho-educational assessment, learning support, and career counselling and assessment; collaborating with parents, teachers, and other stakeholders; providing learning support; writing reports and development of an individual intervention plan.
- The capacity to analyse and use the research methodology and techniques in response to the challenges in schools and communities.



- To conduct and report on research under supervision in order to prepare for research-based post-graduate studies.
- A commitment to high ethical standards in the practice of counselling in schools.
- Advanced reflection on professional and personal development.

PROGRAMME STRUCTURE

The programme is offered full-time over one year. The programme is offered in a contact mode using a blended teaching and learning approach (face-to-face and virtual mode) that necessitates engagement with the curriculum and completing some lectures and activities in an online learning environment. The virtual mode will be conducted at the departmental approved season (May to July).

All modules are compulsory and must be completed in the same year.

All students entering this qualification are expected to be conversant with information and communication technology (ICT).

CURRICULUM

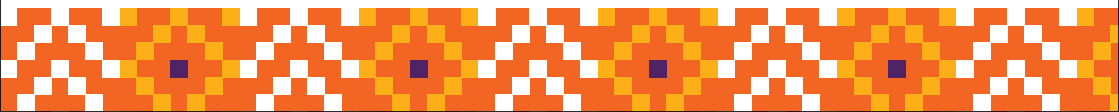
Curriculum summary – B Ed Honours in Educational Psychology			
All modules are compulsory year modules			
Module name	Module code	NQF level	Credits
Educational psychological practice	HEPP00Y	8	30
Basic counselling and learning support	HCLS00Y	8	30
Educational and career assessment	HPCA00Y	8	30
Educational psychological research methodology and project	HPRM00Y	8	30

ADDITIONAL INFORMATION

- The qualification is offered on a full-time basis over one year
- Classes are offered once a week in the afternoon and are compulsory
- Working students are allowed to register only if they can attend classes (15:00 - 18:00 Mondays)

DISCLAIMER

This qualification will allow you to function as a teacher with advanced educational psychology knowledge. The qualification will not lead to registration with the Psychology Board of the Health Professions Council of South Africa (HPCSA) as a registered counsellor but will allow you to apply for the MEd (Educational Psychology) degree, which may ultimately lead to registering as a professional educational psychologist.



Fulfilling all the minimum entry requirements does not guarantee acceptance into the programme.

The faculty reserves the right to limit numbers according to its enrolment targets. The Faculty of Education also reserves the right to cancel an application or registration in the event that there are insufficient student enrolments to ensure the viability of the programme.

APPLICATION AND REGISTRATION DATES

To submit your **application**, apply online using the following link **Apply@UJ**. The closing dates can be seen on the UJ website.

The due dates for **registration** are available at **Registrations@UJ**.

** Only accepted applicants are permitted to register.*

CONTACT DETAILS

- For **academic-related matters** such as course content or class attendance, contact the programme coordinator, **Ms Athena Clayton (athenac@uj.ac.za)**.
- For **administrative-related matters** such as application statuses, registration, or fees contact **Ms Lebogang Mogano (lmogano@uj.ac.za)**.

www.uj.ac.za/edu

